

**ORDER OF THE COMMISSIONERS COURT OF GRIMES COUNTY,
TEXAS DESIGNATING, CREATING AND ESTABLISHING SPACE
REINVESTMENT ZONE NO. 01-2026-001**

WHEREAS, pursuant to Chapter 312, Subchapter C of the *Texas Property Tax Code* and the Grimes County Tax Abatement Guidelines, the Grimes County Commissioners Court is authorized to create county reinvestment zones for purposes of allowing for tax abatements to encourage the expansion and/or retention of primary employment, attract major investment to the zone, and contribute to the economic development of Grimes County;

WHEREAS, Space Exploration Technology Corporation is proposing to develop and construct/install facilities and equipment for, and the operation a semiconductor manufacturing plant, power plant, and artificial intelligence facility to assist with operations and all related equipment in an unincorporated area of Grimes County (hereinafter "Project") on the property described in Exhibit "A" and on Exhibit "B" which are attached hereto and incorporated herein by reference;

WHEREAS, notice of the consideration by the Commissioners Court of the creation of a County Reinvestment Zone having the same boundaries as the property boundaries set forth in Exhibits "A" and "B" and the public hearing thereon was given in accordance with Section 312.401 of the *Texas Property Tax Code*;

WHEREAS, a public hearing was held in accordance with Section 312.401 of the *Texas Property Tax Code*; and

WHEREAS, after considering the information before it, including input from the public hearing, the Commissioners Court finds that creation of the Reinvestment Zone is in the best interest of the County and its citizens.

NOW, THEREFORE, BE IT ORDERED BY THE COMMISSIONERS COURT OF GRIMES COUNTY, TEXAS THAT:

1. the above recitals are incorporated herein for all purposes;
2. the Commissioners Court hereby finds that the creation and establishment of a County Reinvestment Zone having the boundaries set forth in Exhibit "A" and Exhibit "B" would contribute to the retention or expansion of primary employment or would attract major investment in the zone that would be a benefit to the property to be included in the zone, would be a benefit to the taxing units with jurisdiction over the land after expiration of the Zone or any abatement agreements entered into for property within the Zone, would contribute to the economic development and tax base of Grimes County; and would support the Texas economy; and

3. SpaceX Reinvestment Zone No. 01-2026-001 having the boundaries set forth in Exhibits "A" and "B" is hereby created, designated and established, which Zone shall be eligible for tax abatement subject to the *Texas Property Tax Code*, the Grimes County Tax Abatement Guidelines, and approval of any applicable Tax Abatement Agreement by this Commissioners Court.

PASSED and APPROVED at a meeting of the Grimes County Commissioners Court noticed and held in accordance with Chapter 551 of the *Government Code* on June 3, 2026.



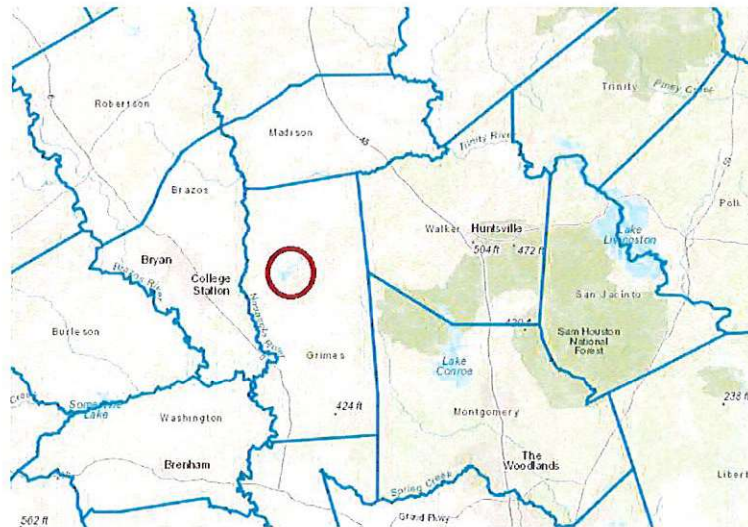
Joe Fauth III, County Judge

Attest:

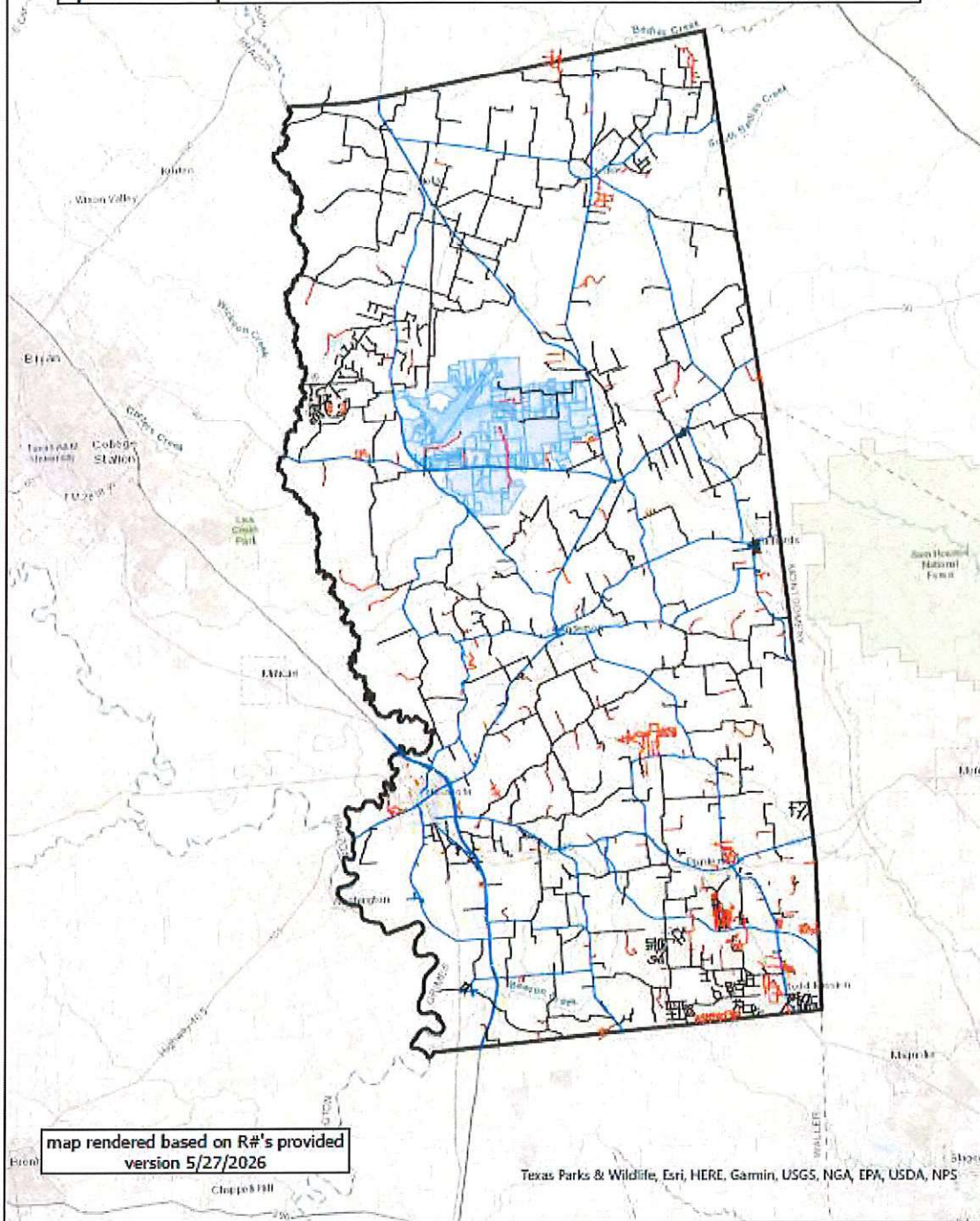


County Clerk

EXHIBIT A



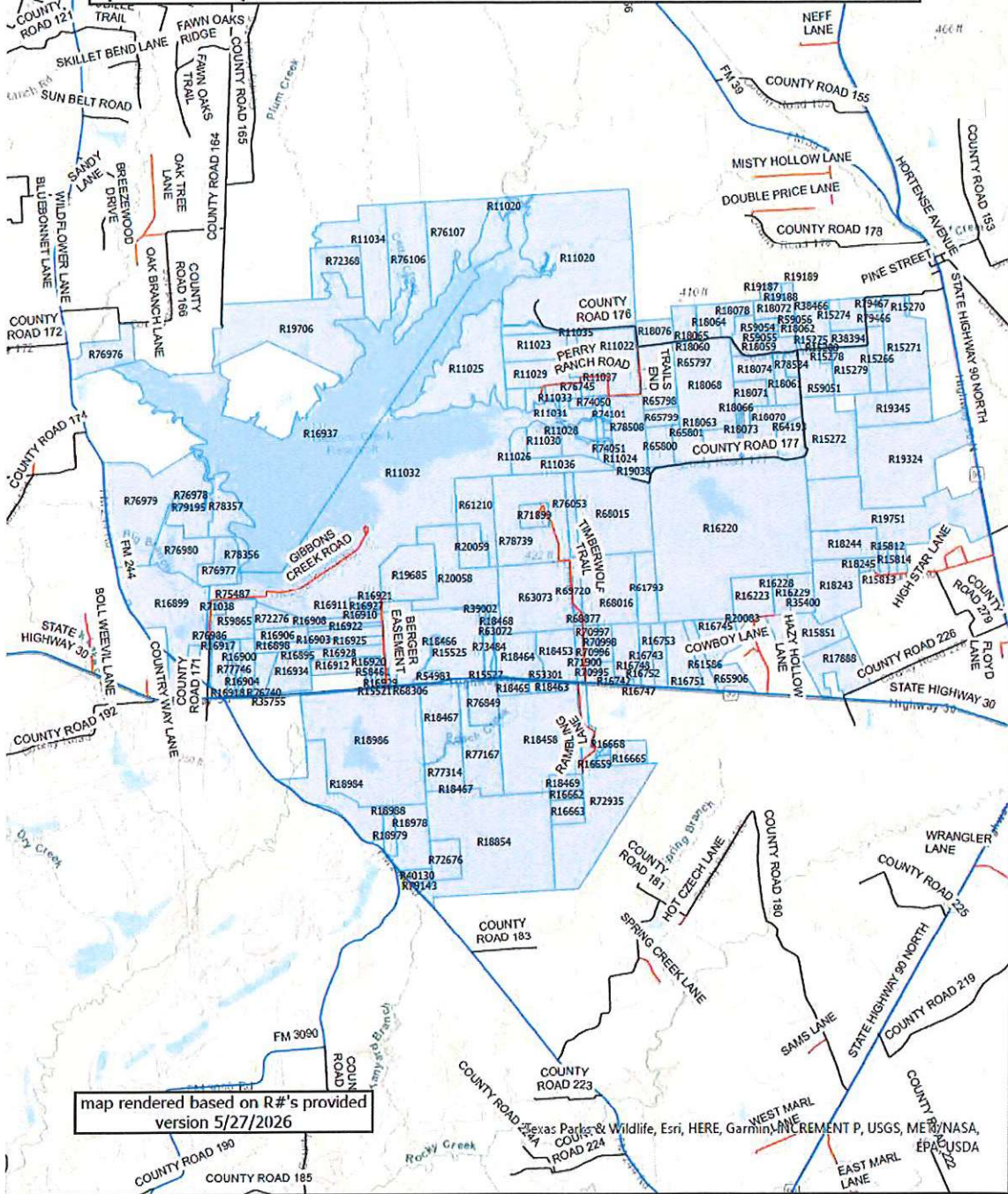
Grimes County, Texas SpaceX Proposed Reinvestment Zone



map rendered based on R#'s provided
version 5/27/2026

Texas Parks & Wildlife, Esri, HERE, Garmin, USGS, NGA, EPA, USDA, NPS

Grimes County, Texas SpaceX Proposed Reinvestment Zone



map rendered based on R#'s provided
version 5/27/2026

Texas Parks & Wildlife, Esri, HERE, Garmin, INCREMENT P, USGS, METI/NASA, EPAC/USDA

Grimes County, Texas SpaceX Proposed Reinvestment Zone

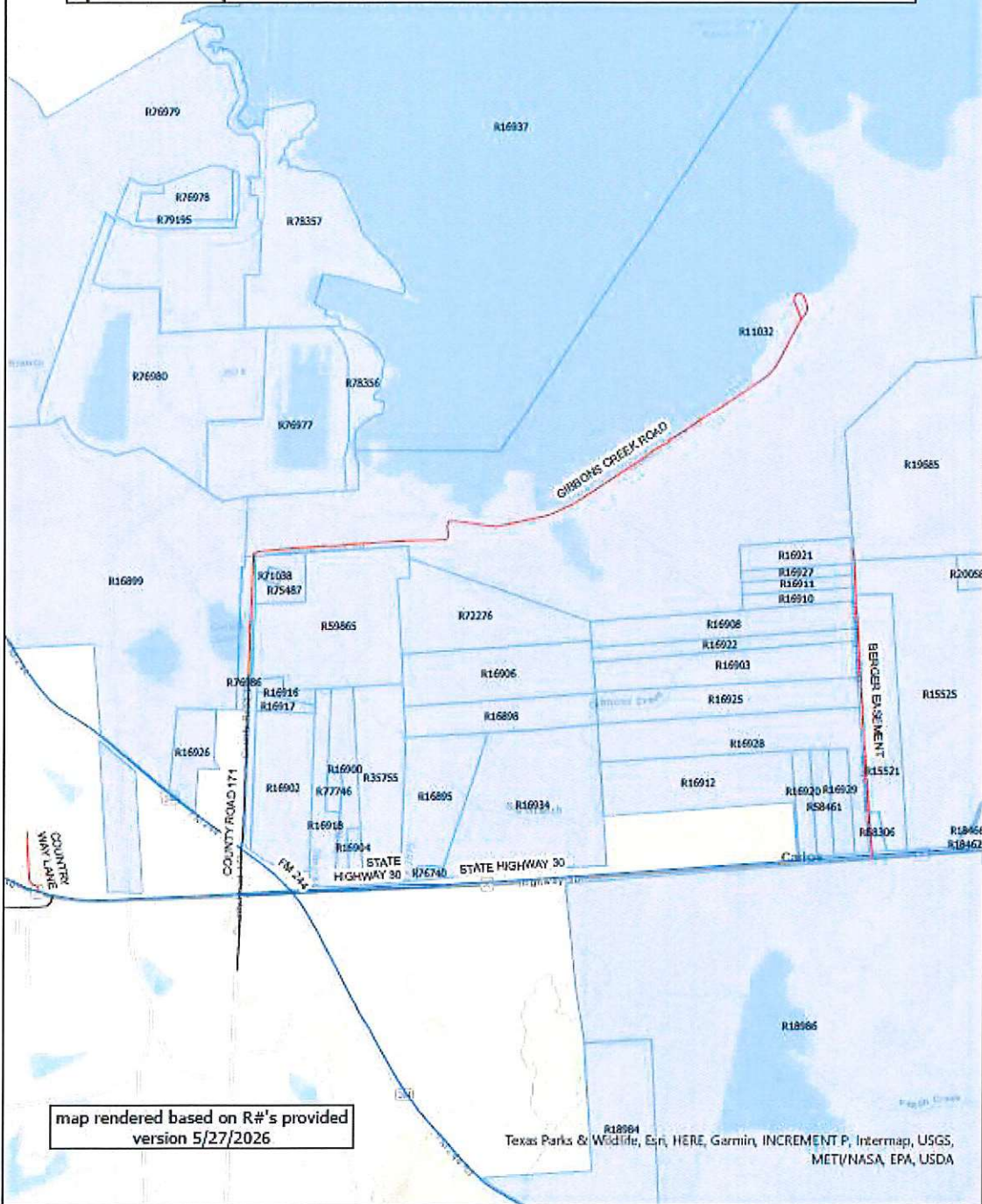


EXHIBIT B

Property ID	Account No.	Legal Description	Situs Address	2026 Assessed Value	Acreage
R11032	15-000-0130	A0015 WM FITZGIBBONS, TRACT 13, ACRES 1987.1, ALSO IN A-15, A-275, A-223, A506, A-470	Gibbons Creek Rd, Anderson, TX 77830	\$5,187,780.00	1,987.1000
R16937	223-000-0660	A0223 P GOODBREAD, TRACT 66, ACRES 1847, ALSO IN A-15, A-312, A-471, A-312 (NORTH PART OF LAKE IOLA ISD)	12824 Gibbons Creek Rd, Anderson, TX 77830	\$7,609,630.00	1,847.0000
R16920	223-000-0240	A0223 P GOODBREAD, TRACT 24, ACRES 9.59	Hwy 30 Anderson, TX 77830	\$117.00	9.5900
R18466	367-000-0170	A0367 P B O'CONNOR, TRACT 17, ACRES 4.857	9791 Hwy 30 Anderson, TX 77830	\$1,628,260.00	4.8570
R16912	223-000-0180	A0223 P GOODBREAD, TRACT 18, ACRES 50.00	<i>Not Available</i>	\$3,440.00	50.0000
R16665	214-000-0065	A0214 M FRAZIER, TRACT 6-5, ACRES 50	7616 Rambling Ln, Anderson, TX 77830	\$182,270.00	50.0000
R16659	214-000-0020	A0214 M FRAZIER, TRACT 2, ACRES 10.41	7464 Rambling Ln, Anderson, TX 77830	\$487,280.00	10.4100

R16668	214-000-0090	A0214 M FRAZIER, TRACT 9, ACRES 6.875	Rambling Ln, Anderson, TX 77830	\$1,320.00	6.8750
R76849	367-000-0181	A0367 P B O'CONNOR, TRACT 18-1, ACRES 80	Hwy 30 Anderson, TX 77830	\$6,000.00	80.0000
R19685	470-000-0010	A0470 WM WALKER, TRACT 1, ACRES 165.47	<i>Not Available</i>	\$10,450.00	165.4700
R16748	219-000-0061	A0219 GEO GALASPY, TRACT 6-1, ACRES 94.592	11341 Hwy 30 Anderson, TX 77830	\$65,500.00	94.5920
R61586	219-000-0042	A0219 GEO GALASPY, TRACT 4-2, ACRES 53.732	Hwy 30 Anderson, TX 77830	\$12,200.00	53.7320
R68877	412-000-0026	A0412 B F SMITH, TRACT 2-6, ACRES 1.92	<i>Not Available</i>	\$100.00	1.9200
R68016	412-000-0025	A0412 B F SMITH, TRACT 2-5, ACRES 240.769	8792 Timberwolf Trl, Anderson, TX 77830	\$20,200.00	240.7690
R15270	67-000-0080	A0067 B F ARNOLD, TRACT 8, ACRES 5.00	CR 176 Bedias, TX 77831	\$380.00	5.0000
R64193	320-000-0141	A0320 WM MC COY, TRACT 14-1, ACRES 57	<i>Not Available</i>	\$711,360.00	57.0000
R11035	15-000-0075	A0015 WM FITZGIBBONS, TRACT 7-5, ACRES 10	6787 CR 176 Bedias, TX 77831	\$1,010.00	10.0000

R11031	15-000-0120	A0015 WM FITZGIBBONS, TRACT 12, ACRES 8	<i>Not Available</i>	\$810.00	8.0000
R18984	408-000- 0040	A0408 U SANDERS, TRACT 4, ACRES 194.747	FM 244 Anderson, TX 77860	\$166,140	194.7470
R18986	408-000- 0060	A0408 U SANDERS, TRACT 6, ACRES 722.85	<i>Not Available</i>	\$50,530	722.8500
R18988	408-000- 0090	A0408 U SANDERS, TRACT 9, ACRES 7.50	<i>Not Available</i>	\$440	7.5000
R18979	408-000- 0011	A0408 U SANDERS, TRACT 1-1, ACRES 30.71	FM 244 Anderson, TX 77830	\$1,950	30.7100
R18978	408-000- 0010	A0408 U SANDERS, TRACT 1, ACRES 130.78	FM 244 Anderson, TX 77830	\$166,420	130.7800
R40130	408-000- 0051	A0408 U SANDERS, TRACT 5-1, ACRES 20.252	FM 244 Anderson, TX 77830	\$406,120	20.2520
R79143	393-000- 0164	A0408 U SANDERS, TRACT 5-3, ACRES 7.12	FM 244 Anderson, TX 77830	\$410	7.1200
R72676	393-000- 0165	A0393 H W RAGLIN, TRACT 16-5, ACRES 70	<i>Not Available</i>	\$4,060	70.0000

R18854	393-000-0160	A0393 H W RAGLIN, TRACT 16, ACRES 697.267, (PARTLY IN A-408)	7254 FM 244 Anderson, TX 77830	\$102,690	697.2670
R77314	367-000-0183	A0367 P B O'CONNOR, TRACT 18-3, ACRES 85.66	Hwy 30 Anderson, TX 77830	\$8,650	85.6600
R18467	367-000-0180	A0367 P B O'CONNOR, TRACT 18, ACRES 163.176	9404 Hwy 30 Anderson, TX 77830	\$177,940	163.1760
R77167	367-000-0182	A0367 P B O'CONNOR, TRACT 18-2, ACRES 183.21	Hwy 30 Anderson, TX 77830	\$14,500	183.2100
R18465	367-000-0150	A0367 P B O'CONNOR, TRACT 15, ACRES 25.00	Hwy 30 Anderson, TX 77830	\$2,530	25.0000
R53301	367-000-0115	A0367 P B O'CONNOR, TRACT 11-5, ACRES 5.64	10516 Hwy 30 Anderson, TX 77830	\$367,740	5.6400
R18458	367-000-0071	A0367 P B O'CONNOR, TRACT 7-1, ACRES 456.61	7941 Rambling Ln Anderson, TX 77830	\$386,410	456.6100
R18463	367-000-0110	A0367 P B O'CONNOR, TRACT 11, ACRES 20.57	Hwy 30 Anderson, TX 77830	\$9,970	20.5700
R18469	367-000-0200	A0367 P B O'CONNOR, TRACT 20, ACRES 32.00	Not Available	\$1,860	32.0000

R16662	214-000-0040	A0214 M FRAZIER, TRACT 4, ACRES 18.00	Not Available	\$1,040	18.0000
R16663	214-000-0050	A0214 M FRAZIER, TRACT 5, ACRES 50.00	Not Available	\$2,900	50.0000
R72935	214-000-0095	A0214 M FRAZIER, TRACT 9-5, ACRES 428.635	Hwy 30 Anderson, TX 77830	\$102,440	428.6350
R76979	223-000-0668	A0223 P GOODBREAD, TRACT 66-8, ACRES 483.798	12824 FM 244 Iola, TX 77861	\$1,931,030	483.7980
R78357	223-000-0667	A0223 P GOODBREAD, TRACT 66-7, ACRES 97.866	FM 244 Iola, TX 77861	\$261,880	97.8660
R76980	223-000-0666	A0223 P GOODBREAD, TRACT 66-6, ACRES 144, (TRACT 2A)	FM 244 Iola, TX 77861	\$145,580	144.0000
R76977	223-000-0669	A0223 P GOODBREAD, TRACT 66-9, ACRES 88.6, (TRACT 4)	FM 244 Iola, TX 77861	\$1,744,060	88.6000
R78356	223-000-0665	A0223 P GOODBREAD, TRACT 66-5, ACRES 18.06, (STRIP)	FM 244 Iola, TX 77861	\$1,820	18.0600
R16899	223-000-0040	A0223 P GOODBREAD, TRACT 4, ACRES 372.23	FM 244 Anderson, TX 77830	\$25,890	372.2300

R16926	223-000-0360	A0223 P GOODBREAD, TRACT 36, ACRES 15.43	10452 FM 244 Anderson, TX 77830	\$75,870	15.4300
R16900	223-000-0050	A0223 P GOODBREAD, TRACT 5, ACRES 19.196	7529 HWY 30 Anderson, TX 77830	\$392,420	19.1960
R16917	223-000-0221	A0223 P GOODBREAD, TRACT 22-1, ACRES 3.961	8618 CR 171 Anderson, TX 77830	\$660,690	3.9610
R16916	223-000-0220	A0223 P GOODBREAD, TRACT 22, ACRES 3.961	8618 CR 171 Anderson, TX 77830	\$149,950	3.9610
R75487	223-000-0047	A0223 P GOODBREAD, TRACT 4-7, ACRES 9.5	8952 Gibbons Creek Rd Anderson, TX 77830	\$710	9.5000
R71038	223-000-0045	A0223 P GOODBREAD, TRACT 4-5, ACRES 1	8952 Gibbons Creek Rd Anderson, TX 77830	\$560,310	1.0000
R59865	223-000-0041	A0223 P GOODBREAD, TRACT 4-1, ACRES 87.66	9028 Gibbons Creed Rd Anderson, TX 77830	\$381,380	87.6600
R35755	223-000-0025	A0223 P GOODBREAD, TRACT 2-5, ACRES 43.7735	Hwy 30 Anderson, TX 77830	\$27,170	43.7735
R16895	223-000-0020	A0223 P GOODBREAD, TRACT 2, ACRES 41.8896	7729 Hwy 30 Anderson, TX 77830	\$486,700	41.8896

R16934	223-000-0510	A0223 P GOODBREAD, TRACT 51, ACRES 97.0987	7873 Hwy 30 Anderson, TX 77830	\$892,670	97.0987
R16898	223-000-0030	A0223 P GOODBREAD, TRACT 3, ACRES 29.913	<i>Not Available</i>	\$324,570	29.9130
R16906	223-000-0110	A0223 P GOODBREAD, TRACT 11, ACRES 52.995	<i>Not Available</i>	\$3,160	52.9950
R72276	223-000-0112	A0223 P GOODBREAD, TRACT 11-2, ACRES 53.07	CR 171 Anderson, TX 77830	\$3,250	53.0700
R16928	223-000-0400	A0223 P GOODBREAD, TRACT 40, ACRES 55.2	8537 Berger Easement Anderson, TX 77830	\$1,468	55.2000
R58461	223-000-0241	A0223 P GOODBREAD, TRACT 24-1, ACRES 9.59	Hwy 30 Anderson, TX 77830	\$690	9.5900
R16929	223-000-0401	A0223 P GOODBREAD, TRACT 40-1, ACRES 9.60	8531 Berger Easement Anderson, TX 77830	\$72,600	9.6000
R68306	91-000-0025	A0091 WM BERRYMAN, TRACT 2-5, ACRES 2.759	Hwy 30 Anderson, TX 77830	\$264,260	2.7590
R16925	223-000-0300	A0223 P GOODBREAD, TRACT 30, ACRES 45.60	Berger Easement Anderson, TX 77830	\$2,640	45.6000
R16903	223-000-0080	A0223 P GOODBREAD, TRACT 8, ACRES 44.86	Berger Easement Anderson, TX 77830	\$4,630	44.8600

R16922	223-000-0260	A0223 P GOODBREAD, TRACT 26, ACRES 17.18	8851 Berger Easement Anderson, TX 77830	\$57,330	17.1800
R16908	223-000-0140	A0223 P GOODBREAD, TRACT 14, ACRES 34.37	Berger Easement Anderson, TX 77830	\$1,990	34.3700
R16910	223-000-0160	A0223 P GOODBREAD, TRACT 16, ACRES 7.25	8991 Berger Easement Anderson, TX 77830	\$411,430	7.2500
R16911	223-000-0170	A0223 P GOODBREAD, TRACT 17, ACRES 7.25	8999 Berger Easement Anderson, TX 77830	\$184,900	7.2500
R16927	223-000-0390	A0223 P GOODBREAD, TRACT 39, ACRES 7.24	9041 Berger Easement Anderson, TX 77830	\$183,700	7.2400
R16921	223-000-0250	A0223 P GOODBREAD, TRACT 25, ACRES 14.50	9107 Berger Easement Anderson, TX 77830	\$257,190	14.5000
R15521	91-000-0020	A0091 WM BERRYMAN, TRACT 2, ACRES 42.681	Hwy 30 Anderson, TX 77830	\$37,070	42.6810
R15525	91-000-0070	A0091 WM BERRYMAN, TRACT 7, ACRES 377.863	9791 SH 30 Anderson, TX 77830	\$395,050	377.8630
R54983	367-000-0175	A0367 P B O'CONNOR, TRACT 17-5, ACRES 9.998	9471 Hwy 30 Anderson, TX 77830	\$359,930	9.9980

R15527	91-000-0080	A0091 WM BERRYMAN, TRACT 8, ACRES 7.4655, (ALSO PARTLY IN A-367)	Hwy 30 Anderson, TX 77830	\$430	7.4655
R39002	91-000-0090	A0091 WM BERRYMAN, TRACT 9, ACRES 10.17	<i>Not Available</i>	\$1,110	10.1700
R73484	367-000- 0125	A0367 P B O'CONNOR, TRACT 12-5, ACRES 29.08, (ALSO PARTLY IN A-91)	Hwy 30 Anderson, TX 77830	\$2,940	29.0800
R63072	367-000- 0123	A0367 P B O'CONNOR, TRACT 12-3, ACRES 24, (ALSO PARTLY IN A-91)	10191 Hwy 30 Anderson, TX 77830	\$2,420	24.0000
R18468	91-000-0100	A0091 WM BERRYMAN, TRACT 10, ACRES 1	10191 Hwy 30 Anderson, TX 77830	\$787,310	1.0000
R18464	367-000- 0120	A0367 P B O'CONNOR, TRACT 12, ACRES 118.509	Hwy 30 Anderson, TX 77830	\$11,970	118.5090
R20058	506-000- 0010	A0506 G SIDALL, TRACT 1, ACRES 249.73	<i>Not Available</i>	\$14,480	249.7300
R20059	506-000- 0020	A0506 G SIDALL, TRACT 2, ACRES 73.24, (RITZ CABIN)	9657 Timberwolf Trl Anderson, TX 77830	\$91,320	73.2400

R63073	412-000-0022	A0412 B F SMITH, TRACT 2-2, ACRES 305.61, (CHEN TRACT)	8733 Timberwolf Trl Anderson, TX 77830	\$148,490	305.6100
R61210	275-000-0012	A0275 H&TC RR, TRACT 1-2, ACRES 134.5, (RITZ TRACT)	9657 Timberwolf Trl Anderson, TX 77830	\$7,260	134.5000
R78739	412-000-0029	A0412 B F SMITH, TRACT 2-9, ACRES 376.42, (SPEED TRACT)	Timberwolf Trl Anderson, TX 77830	\$53,720	376.4200
R71899	412-000-0021	A0412 B F SMITH, TRACT 2-1, ACRES 40	10965 Timberwolf Trl Anderson, TX 77830	\$403,880	40.0000
R71900	515-000-0020	A0515 R D PARKER, TRACT 2, ACRES 27.63	8343 Timberwolf Trl Anderson, TX 77830	\$228,660	27.6300
R69720	412-000-0027	A0412 B F SMITH, TRACT 2-7, ACRES 26.63	<i>Not Available</i>	\$1,440	26.6300
R76053	412-000-0028	A0412 B F SMITH, TRACT 2-8, ACRES 43.47	Timberwolf Trl Anderson, TX 77830	\$2,350	43.4700
R70995	219-000-0011	A0219 GEO GALASPY, TRACT 1-1, ACRES 15.94	Hwy 30 Anderson, TX 77830	\$3,620	15.9400
R70996	219-000-0012	A0219 GEO GALASPY, TRACT 1-2, ACRES 15.94	<i>Not Available</i>	\$3,620	15.9400

R70997	219-000-0013	A0219 GEO GALASPY, TRACT 1-3, ACRES 15.94	<i>Not Available</i>	\$3,620	15.9400
R16742	219-000-0010	A0219 GEO GALASPY, TRACT 1, ACRES 15.94	11119 Hwy 30 Anderson, TX 77830	\$84,260	15.9400
R70999	219-000-0015	A0219 GEO GALASPY, TRACT 1-5, ACRES 15.94	<i>Not Available</i>	\$3,620	15.9400
R70998	219-000-0014	A0219 GEO GALASPY, TRACT 1-4, ACRES 15.94	<i>Not Available</i>	\$3,620	15.9400
R16752	219-000-0130	A0219 GEO GALASPY, TRACT 13, ACRES 4.249	11319 Hwy 30 Anderson, TX 77830	\$421,768	4.2490
R16747	219-000-0060	A0219 GEO GALASPY, TRACT 6, ACRES 2.03	11401 Hwy 30 Anderson, TX 77830	\$234,580	2.0300
R68015	412-000-0024	A0412 B F SMITH, TRACT 2-4, ACRES 371.31	<i>Not Available</i>	\$90,100	371.3100
R61793	412-000-0023	A0412 B F SMITH, TRACT 2-3, ACRES 90.18	<i>Not Available</i>	\$4,870	90.1800
R16743	219-000-0140	A0219 GEO GALASPY, TRACT 2, ACRES 50.41	Hwy 30 Anderson, TX 77830	\$10,720	50.4100
R16751	219-000-0100	A0219 GEO GALASPY, TRACT 10, ACRES 106.918	Hwy 30 Anderson, TX 77830	\$242,940	106.9180

R65906	190-000-0071	A0190 C O EDWARDS, TRACT 7-1, ACRES 56.695	Hwy 30 Anderson, TX 77830	\$12,870	56.6950
R16745	219-000-0040	A0219 GEO GALASPY, TRACT 4, ACRES 81.758	Hwy 30 Anderson, TX 77830	\$18,560	81.7580
R20083	517-000-0010	A0517 L B DANFORD, TRACT 1, ACRES 4.74	<i>Not Available</i>	\$1,080	4.7400
R16223	188-000-0040	A0188 A EDSON, TRACT 4, ACRES 104.78	<i>Not Available</i>	\$23,790	104.7800
R16220	188-000-0010	A0188 A EDSON, TRACT 1, ACRES 1300.82	CR 177 Bedias, TX 77831	\$213,850	1,300.8200
R15851	145-000-0130	A0145 BBB & CRR, TRACT 13, ACRES 160	Hwy 30 Anderson, TX 77830	\$35,760	160.0000
R17888	310-000-0010	A0310 R LOWE, TRACT 1, ACRES 123.869	Hwy 30 Anderson, TX 77830	\$27,240	123.8690
R16228	188-000-0090	A0188 A EDSON, TRACT 9, ACRES 40	<i>Not Available</i>	\$27,540	40.0000
R16229	188-000-0091	A0188 A EDSON, TRACT 9-1, ACRES 1	<i>Not Available</i>	\$173,840	1.0000
R35400	188-000-0093	A0188 A EDSON, TRACT 9-3, ACRES 58.00	9118 Hazy Hollow Ln Anderson, TX 77830	\$58,420	58.0000

R18243	334-000-0014	A0334 JC MASSEY, TRACT 1-4, ACRES 164.16	Not Available	\$37,830	164.1600
R19751	472-000-0140	A0472 B WHITE, TRACT 14, ACRES 431.28	10735 Hwy 90 N, Bédias, TX 77831	\$596,530	431.2800
R11026	15-000-0060	A0015 WM FITZGIBBONS, TRACT 6, ACRES 50.15	Not Available	\$3,270	50.1500
R11030	15-000-0110	A0015 WM FITZGIBBONS, TRACT 11, ACRES 73.3	Not Available	\$30,130	73.3000
R11036	15-000-0190	A0015 WM FITZGIBBONS, TRACT 19, ACRES 92.3	Not Available	\$14,310	92.3000
R11028	15-000-0080	A0015 WM FITZGIBBONS, TRACT 8, ACRES 94.25	Not Available	\$5,460	94.2500
R74051	15-000-0206	A0015 WM FITZGIBBONS, TRACT 20-6, ACRES 17.07	Not Available	\$1,280	17.0700
R19038	412-000-0010	A0412 B F SMITH, TRACT 1, ACRES 15	CR 177 Bédias, TX 77831	\$1,040	15.0000
R11024	15-000-0040	A0015 WM FITZGIBBONS, TRACT 4, ACRES 66.76	CR 177 Bédias, TX 77831	\$5,160	66.7600
R65800	320-000-0230	A0320 WM MC COY, TRACT 23, ACRES 62.18	Traits End Ln Bédias, TX 77831	\$32,440	62.1800

R65801	320-000-0231	A0320 W M M C COY, TRACT 23-1, ACRES 62.18	CR 177 Bedias, TX 77831	\$4,660	62.1800
R18063	320-000-0060	A0320 W M M C COY, TRACT 6, ACRES 81.80	CR 177 Bedias, TX 77831	\$4,420	81.8000
R18066	320-000-0100	A0320 W M M C COY, TRACT 10, ACRES 8.50	CR 177 Bedias, TX 77831	\$490	8.5000
R18073	320-000-0190	A0320 W M M C COY, TRACT 19, ACRES 12.764	CR 177 Bedias, TX 77831	\$740	12.7640
R18070	320-000-0145	A0320 W M M C COY, TRACT 14-5, ACRES 117.00	2824 CR 177 Bedias, TX 77831	\$1,063,530	117.0000
R15272	67-000-0090	A0067 B F ARNOLD, TRACT 9, ACRES 248	CR 177 Bedias, TX 77831	\$9,950	248.0000
R15266	67-000-0010	A0067 B F ARNOLD, TRACT 1, ACRES 70	<i>Not Available</i>	\$808,500	70.0000
R11025	15-000-0050	A0015 W M FITZGIBBONS, TRACT 5, ACRES 305.83	<i>Not Available</i>	\$26,570	305.8300
R11029	15-000-0100	A0015 W M FITZGIBBONS, TRACT 10, ACRES 105.6	<i>Not Available</i>	\$6,870	105.6000
R11023	15-000-0030	A0015 W M FITZGIBBONS, TRACT 3, ACRES 106.57	12265 Trails End Ln Bedias, TX 77831	\$340,890	106.5700

R11033	15-000-0160	A0015 WM FITZGIBBONS, TRACT 16, ACRES 31.35	Not Available	\$1,820	31.3500
R76745	15-000-0161	A0015 WM FITZGIBBONS, TRACT 16-1, ACRES 2	12783 Perry Ranch Rd Bedias, TX 77831	\$47,040	2.0000
R11037	15-000-0200	A0015 WM FITZGIBBONS, TRACT 20, ACRES 34.14	12353 Perry Ranch Rd Bedias, TX 77831	\$16,282	34.1400
R74050	15-000-0203	A0015 WM FITZGIBBONS, TRACT 20-3, ACRES 34.14	12275 Perry Ranch Rd Bedias, TX 77831	\$101,520	34.1400
R74101	15-000-0208	A0015 WM FITZGIBBONS, TRACT 20-8, ACRES 17.07	12269 Perry Ranch Rd Bedias, TX 77831	\$343,500	17.0700
R78508	15-000-0042	A0015 WM FITZGIBBONS, TRACT 4-2, ACRES 68.24	CR 177 Bedias, TX 77831	\$5,120	68.2400
R65799	320-000- 0229	A0320 WM MC COY, TRACT 22-9, ACRES 41.45	Traits End Ln Bedias, TX 77831	\$3,110	41.4500
R65798	320-000- 0228	A0320 WM MC COY, TRACT 22-8, ACRES 41.45	Traits End Ln Bedias, TX 77831	\$3,110	41.4500
R65797	320-000- 0227	A0320 WM MC COY, TRACT 22-7, ACRES 41.45	Traits End Ln Bedias, TX 77831	\$3,110	41.4500
R18068	320-000- 0120	A0320 WM MC COY, TRACT 12, ACRES 300.00	CR 176 Bedias, TX 77831	\$20,410	300.0000

R18060	320-000-0020	A0320 WM MC COY, TRACT 2, ACRES 50.00	CR 176 Bedias, TX 77831	\$2,900	50.0000
R11022	15-000-0020	A0015 WM FITZGIBBONS, TRACT 2, ACRES 214.6	6663 CR 176 Bedias, TX 77831	\$75,530	214.6000
R11020	15-000-0010	A0015 WM FITZGIBBONS, TRACT 1, ACRES 1006.24	7354 CR 176 Bedias, TX 77831	\$48,975	1,006.2400
R18076	320-000-0210	A0320 WM MC COY, TRACT 21, ACRES 54.048	CR 176 Bedias, TX 77831	\$11,530	54.0480
R18065	320-000-0091	A0320 WM MC COY, TRACT 9-1, ACRES 49.769	CR 176 Bedias, TX 77831	\$11,300	49.7690
R18064	320-000-0090	A0320 WM MC COY, TRACT 9, ACRES 50.19	CR 176 Bedias, TX 77831	\$2,710	50.1900
R18078	320-000-0240	A0320 WM MC COY, TRACT 24, ACRES 52	CR 176 Bedias, TX 77831	\$2,810	52.0000
R18059	320-000-0010	A0320 WM MC COY, TRACT 1, ACRES 100.00	CR 176 Bedias, TX 77831	\$6,450	100.0000
R19187	417-000-0100	A0417 JW SCOTT, TRACT 10, ACRES 8.00	<i>Not Available</i>	\$460	8.0000
R19188	417-000-0110	A0417 JW SCOTT, TRACT 11, ACRES 8.00	<i>Not Available</i>	\$460	8.0000
R19189	417-000-0120	A0417 JW SCOTT, TRACT 12, ACRES 8	<i>Not Available</i>	\$460	8.0000

R76107	15-000-0173	A0015 WM FITZGIBBONS, TRACT 17-3, ACRES 256.33	<i>Not Available</i>	\$4,793	256.3300
R76106	15-000-0172	A0015 WM FITZGIBBONS, TRACT 17-2, ACRES 256.33	<i>Not Available</i>	\$4,576	256.3300
R11034	15-000-0170	A0015 WM FITZGIBBONS, TRACT 17, ACRES 256.34	<i>Not Available</i>	\$21,590	256.3400
R72368	471-000- 0246	A0471 T H WALKER, TRACT 24-6, ACRES 132.55	CR 164 Iola, TX 77861	\$7,860	132.5500
R19706	471-000- 0490	A0471 T H WALKER, TRACT 49, ACRES 515.89, (TRACT 8)	<i>Not Available</i>	\$37,020	515.8900
R19673	466-000- 0146	A0466 A VINCENT, TRACT 14-6, ACRES 5.868	10713 CR 446, Navasota, TX 77868	\$576,810	5.8680
R16753	219-000- 0140	A0219 GEO GALASPY, TRACT 14, ACRES 50.41	11695 Hwy 30, Anderson, TX 77830	\$11,440	50.4100
R18453	367-000- 0020	A0367 P B O'CONNOR, TRACT 2, ACRES 111.16	Hwy 30 Anderson, TX 77830	\$26,790	111.1600
R76978	223-000- 0680	A0223 P GOODBREAD, TRACT 68, ACRES 19.68, (ELECTRIC SUBSTATION)	FM 244 Iola, TX 77861	\$985,850	19.6800

R79195	223-000-0661	A0223 P GOODBREAD, TRACT 66-1, ACRES 9.556	FM 244 Iola, TX 77861	\$338,910	9.5560
R76976	312-000-0701	A0312 J F MARTIN, TRACT 70-1, ACRES 114.39, (TRACT 7)	FM 244 Iola, TX 77861	\$10,480	114.3900
R76740	223-000-0022	A0223 P GOODBREAD, TRACT 2-2, ACRES 1.5794	7708 Hwy 30, Anderson, TX 77830	\$280,797	1.5794
R76986	223-000-0052	A0223 P GOODBREAD, TRACT 5-2, ACRES 14.983, (OLD RAIL SPUR)	FM 244 Iola, TX 77861	\$242,360	14.9830
R16902	223-000-0070	A0223 P GOODBREAD, TRACT 7, ACRES 37.44	10244 FM 244 Iola, TX 77861	\$3,780	37.4400
R16918	223-000-0230	A0223 P GOODBREAD, TRACT 23, ACRES 17.472	7475 Hwy 30, Anderson, TX 77830	\$770,960	17.4720
R77746	223-000-0051	A0223 P GOODBREAD, TRACT 5-1, ACRES 2.859	7523 Hwy 30, Anderson, TX 77830	\$299,480	2.8590
R16904	223-000-0090	A0223 P GOODBREAD, TRACT 9, ACRES 4	7575 Hwy 30, Anderson, TX 77830	\$365,811	4.0000
R79467	67-000-0012	A0067 B F ARNOLD, TRACT 1-2, ACRES 15	CR 176 Bedias, TX 77831	\$273,000	15.0000

R79466	67-000-0011	A0067 B F ARNOLD, TRACT 1-1, ACRES 15	CR 176 Bedias, TX 77831	\$273,000	15.0000
R15278	67-000-0115	A0067 B F ARNOLD, TRACT 11-5, ACRES 9.46	CR 176 Bedias, TX 77831	\$4,880	9.4600
R59051	67-000-0116	A0067 B F ARNOLD, TRACT 11-6, ACRES 89.54	3963 CR 176 Bedias, TX 77831	\$11,469	89.5400
R15279	67-000-0130	A0067 B F ARNOLD, TRACT 13, ACRES 104.95	3607 CR 176 Bedias, TX 77831	\$144,770	104.9500
R19345	433-000- 0010	A0433 J SNYDER, TRACT 1, ACRES 157.75	<i>Not Available</i>	\$8,520	157.7500
R15271	67-000-0085	A0067 B F ARNOLD, TRACT 8-5, ACRES 217.55	2815 CR 176 Bedias, TX 77831	\$59,840	217.5500
R38394	67-000-0103	A0067 B F ARNOLD, TRACT 10-3, ACRES 35.06	3448 CR 176 Bedias, TX 77831	\$341,280	35.0600
R15274	67-000-0100	A0067 B F ARNOLD, TRACT 10, ACRES 68.238	3186 CR 176 Bedias, TX 77831	\$4,980	68.2380
R38466	67-000-0112	A0067 B F ARNOLD, TRACT 11-2, ACRES 89.99	3958 CR 176 Bedias, TX 77831	\$221,290	89.9900
R15275	67-000-0110	A0067 B F ARNOLD, TRACT 11, ACRES 8.92	4126 CR 176 Bedias, TX 77831	\$171,150	8.9200

R15280	67-000-0140	A0067 BF ARNOLD, TRACT 14, ACRES 1.09	4056 CR 176 Bedias, TX 77831	\$336,260	1.0900
R59056	320-000- 0053	A0320 WM MC COY, TRACT 5-3, ACRES 10	<i>Not Available</i>	\$2,270	10.0000
R18072	320-000- 0180	A0320 WM MC COY, TRACT 18, ACRES 50.00	<i>Not Available</i>	\$2,900	50.0000
R18062	320-000- 0050	A0320 WM MC COY, TRACT 5, ACRES 10.00	<i>Not Available</i>	\$2,270	10.0000
R59054	320-000- 0051	A0320 WM MC COY, TRACT 5-1, ACRES 10.00	<i>Not Available</i>	\$2,270	10.0000
R59055	320-000- 0052	A0320 WM MC COY, TRACT 5-2, ACRES 10.00	<i>Not Available</i>	\$2,270	10.0000
R78534	320-000- 0034	A0320 WM MC COY, TRACT 3-4, ACRES 20	11422 CR 177 Bedias, TX 77831	\$2,130	20.0000
R18061	320-000- 0030	A0320 WM MC COY, TRACT 3, ACRES 55.77	CR 177 Bedias, TX 77831	\$5,160	55.7700
R18074	320-000- 0200	A0320 WM MC COY, TRACT 20, ACRES 75.32	CR 176 Bedias, TX 77831	\$17,600	75.3200
R18071	320-000- 0170	A0320 WM MC COY, TRACT 17, ACRES 47.08	4611 CR 176 Bedias, TX 77831	\$13,840	47.0800

R19324	431-000-0050	A0431 J SCHROEDER, TRACT 5, ACRES 444.95, (PARTLY IN A-146, A-358, A-360, & A-433)	11563 Hwy 90 N Bedias, TX 77831	\$693,880	444.9500
R18244	334-000-0020	A0334 J C MASSEY, TRACT 2, ACRES 119.071	<i>Not Available</i>	\$27,030	119.0710
R18245	334-000-0070	A0334 J C MASSEY, TRACT 7, ACRES 19.84	4038 Luthe Rd Bedias, TX 77831	\$121,050	19.8400
R15812	139-000-0020	A0139 BBB & CRR, TRACT 2, ACRES 15.00	<i>Not Available</i>	\$1,130	15.0000
R15813	139-000-0030	A0139 BBB & CRR, TRACT 3, ACRES 15.00	3734 Luthe Rd Bedias, TX 77831	\$633,050	15.0000
R15814	139-000-0040	A0139 BBB & CRR, TRACT 4, SERIAL # HOTX10A03159A, TITLE # 00991967, LABEL # NTA0785902, ACRES 15	3842 Luthe Rd Bedias, TX 77831	\$78,720	15.0000
Total Appraised Value				\$42,822,896	22,435.09